

SECTION 28-3 REVIEW**FUNGI AND HUMANS****VOCABULARY REVIEW** Answer the questions in the space provided.

1. What are aflatoxins? _____
2. What effect do aflatoxins have on humans? _____
3. Where are the organisms that produce aflatoxins found? _____

4. What is a death angel? _____
5. What is a wheat rust? _____

MULTIPLE CHOICE Write the correct letter in the blank.

- _____ 1. Sniffing, sneezing, and respiratory distress may be symptoms of an allergic reaction to
 - a. cortisone.
 - b. the *Amanita* mushroom.
 - c. the yeast *Candida albicans*.
 - d. mold spores.
- _____ 2. Which of the following is not a condition or disease that can be caused by fungi?
 - a. athlete's foot
 - b. AIDS
 - c. ringworm
 - d. cancer
- _____ 3. Fungal diseases that affect human internal organs are often caused by
 - a. dimorphic fungi.
 - b. deuteromycetes.
 - c. truffles.
 - d. morels.
- _____ 4. The yeast *Saccharomyces cerevisiae* is used to make all of the following except
 - a. bread.
 - b. vaccines.
 - c. ethanol.
 - d. penicillin.
- _____ 5. Fungi of the genus *Cephalosporium* are used to produce
 - a. mushrooms.
 - b. cheese.
 - c. antibiotics.
 - d. soy products.
- _____ 6. Which of the following is not a fungal product of importance to the food-processing industry?
 - a. vitamin B₂
 - b. wheat rust
 - c. citric acid
 - d. gluconic acid
- _____ 7. The automobile fuel gasohol is made in part with
 - a. aflatoxins produced by *Amanita*.
 - b. gluconic acid produced by *Saccharomyces cerevisiae*.
 - c. ethanol produced by yeast.
 - d. citric acid produced by yeast.

SHORT ANSWER Answer the questions in the space provided.

1. What conditions can cause *Candida albicans* to flourish? _____

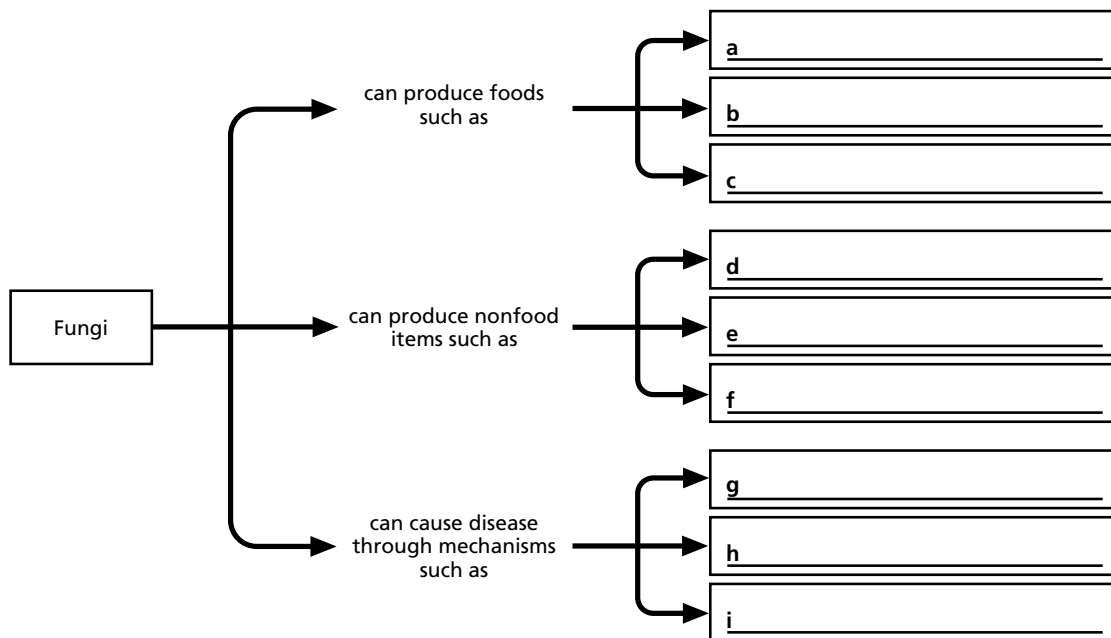
2. Name four specific medical products that are produced by or with the use of fungi. _____

3. Name four types of foods that are produced by or with the use of fungi. _____

4. How is *Saccharomyces cerevisiae* induced to manufacture substances that it does not normally make? _____

5. **Critical Thinking** Some fungi produce substances with attractive odors or flavors. These substances are often concentrated in the reproductive structures of the fungi. Why might it be adaptive for a fungus to produce such substances? _____

STRUCTURES AND FUNCTIONS This flowchart illustrates the effects that fungi can have on humans. Fill in the blanks to complete the chart.



HRW material copyrighted under notice appearing earlier in this work.