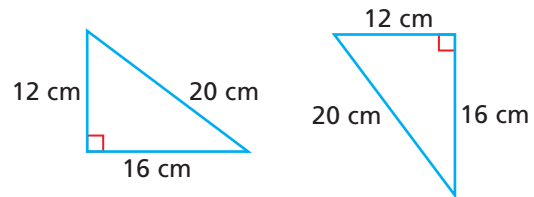
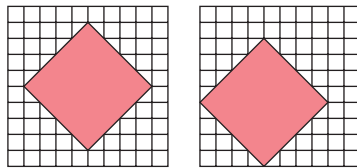


Section Overview

Congruence

Lesson 8-9

Why? Manufacturers use congruent figures in mass production.

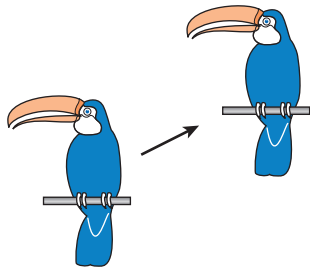


Congruent figures have the same shape and size.

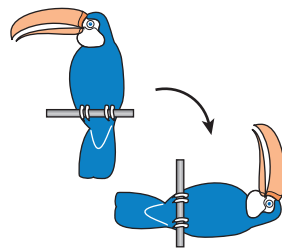
Transformations

Lesson 8-10

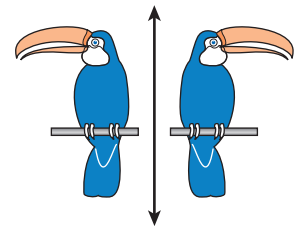
Why? Transformations can be used to alter the size, shape, or position of geometric figures.



Translation



Rotation



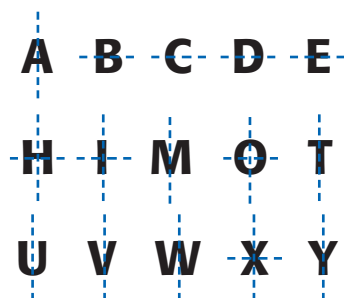
Reflection

Line Symmetry and Tesselations

Lessons 8-11, 8-11 Hands-On Lab

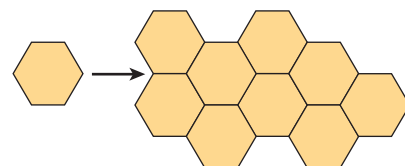
Why? Tesselations are used in works of art.

A figure has **line symmetry** if it can be folded or reflected so that the two parts of the figures match, or are congruent. The line of reflection is called the **line of symmetry**.



Lines of Symmetry

A **tesselation** is a repeating arrangement of one or more shapes that completely cover a plane with no gaps and no overlaps.



Tesselation